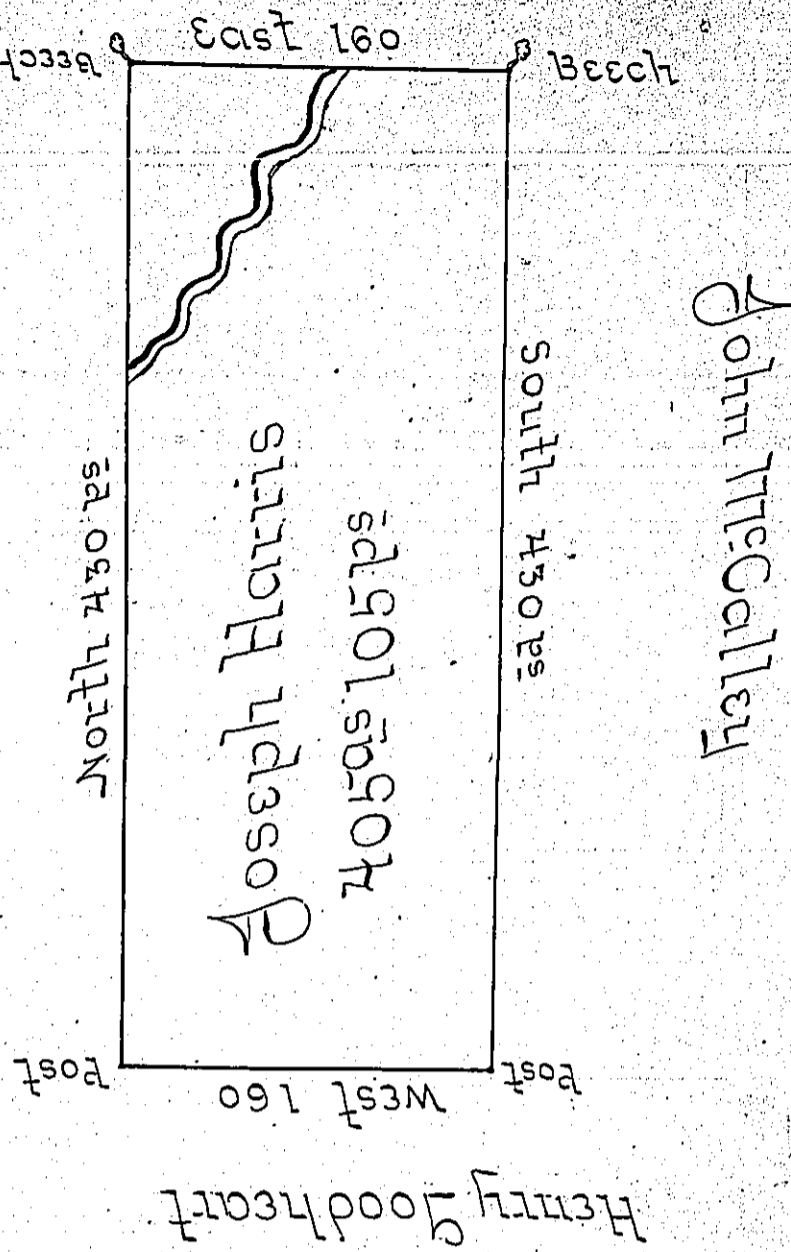


Geo. Harrison



Situated on the Waters of Blacklick Creek in Wheatfield Township Westmoreland County contg. 405 Acres & 105 perches & allowance for Roads &c. ~~was~~ surveyed for Joseph Harris the 15th day of Novem^r 1794 on Warrant dated the 3^d day of May 1795

James Ross U.S.

Daniel Broadhead Esq. Sg.

IN TESTIMONY that the above is a copy of the original remaining on file in the Department of Internal Affairs of Pennsylvania, made conformably to an Act of Assembly approved the 16th day of February, 1833, I have hereunto set my Hand and caused the Seal of said Department to be affixed at Harrisburg, this seventh day of January 1902

James W. Latta
Secretary of Internal Affairs.